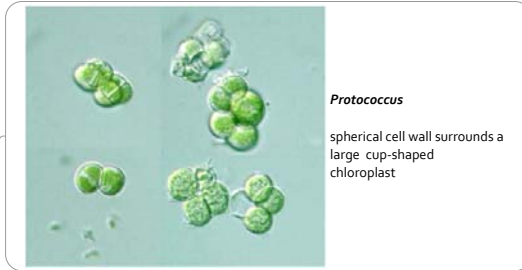
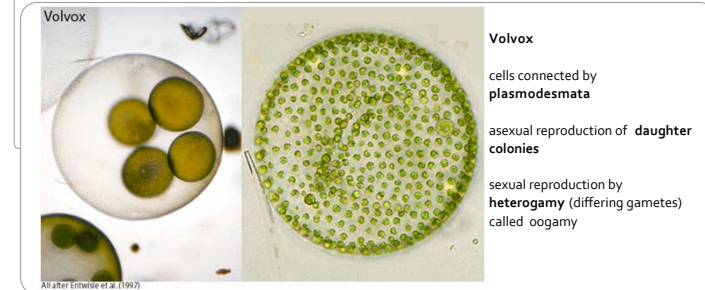
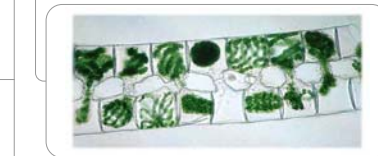


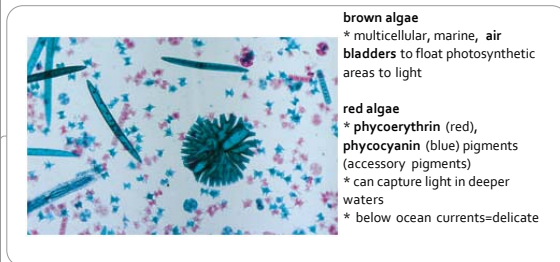
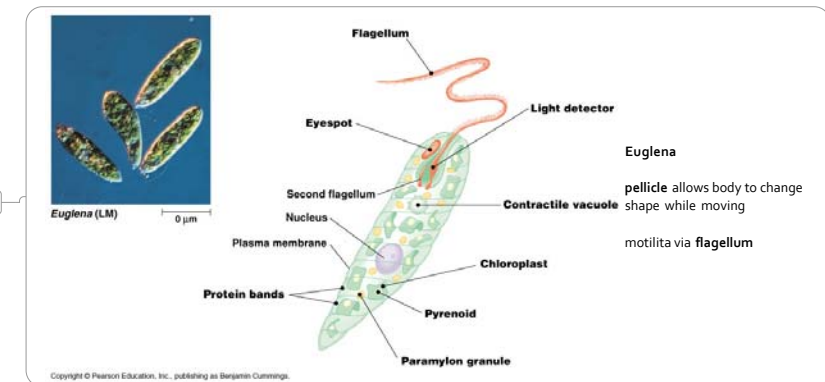
Unicellular Green Algae



Chlorophyta (green algae)



Euglenophyta (euglenoids)

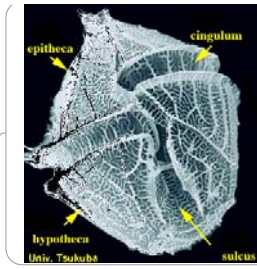


Protista

Examples from lab

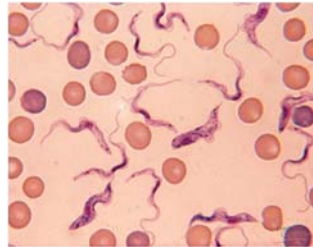


Dinoflagellates
 cellulose plates for cell wall
 2 flagella
 many luminesce ("fire plants")
Gymnodinium & *Gonyaulax* cause "red tide" b/c of bloom



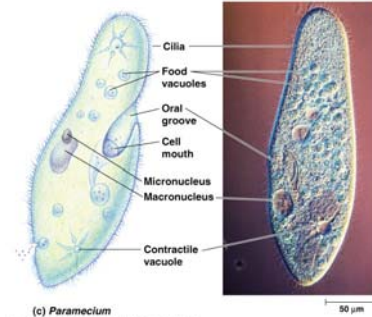
Chrysophyta/Golden Algae/Diatoms
 note geometric shape
 store oil instead of starch
 cell walls of silica
 if oblong in shape then smooth gliding movements b/c of raphe

Zoomastigophora

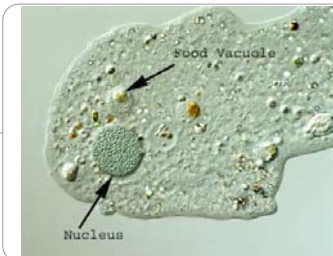


Trypanosome
 flagellum
 heterotrophic
 primitive flagellates
 causes African sleeping sickness

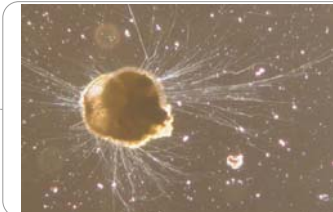
Chilophora



Paramecium
 hair-like projections (cilia)
 macronucleus = general cell control
 micronucleus = sexual reproduction
 heterotrophic



Amoeba
 move by pseudopodia (false feet)
 "blob of protoplasm"
 heterotrophic

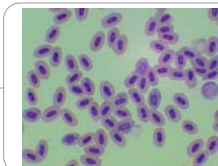


Foraminifera
 has calcium shell



Radiolaria
 silica derivative shell

Sporozoa/Apicomplexa



Plasmodium
 blood parasite, causes malaria
 female Anopheles mosquito is host
 sexual stage alternates with spore-producing asexual stage